



TALLINNA
TEHNIKAKÕRGGKOOI
TTK UNIVERSITY OF APPLIED SCIENCES

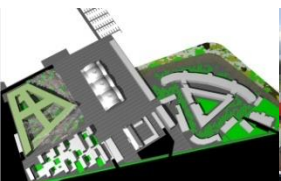
RoadBIM Seminar
11.09.2013 Tallinn





Actions by public owner, lessons learned in civil engineering

 Riigi Kinnisvara



Riigi Kinnisvara AS = State Real Estate Ltd

- Established in 2001
- Owned by Republic of Estonia
- Shareholders meeting performed by the Minister of Finance

Portfolio

- Buildings: 1066
- Closed net.area: 936 817 sqm

biggest projects

Viru Prison (East Estonia)
cost ~74 mln €, 2008

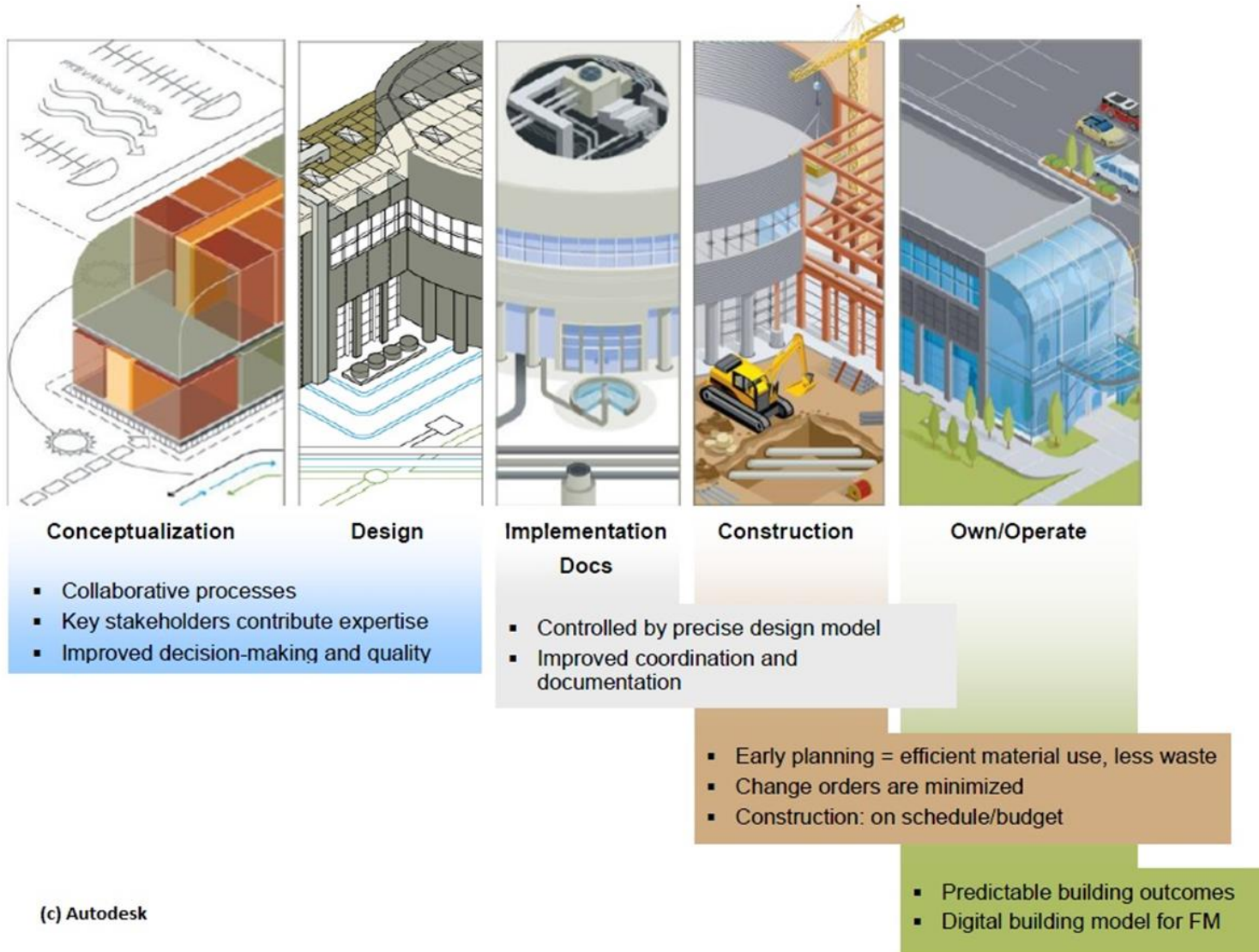


biggest projects

Koidula railway border station (South Estonia)
cost ~70 mln €, 2011

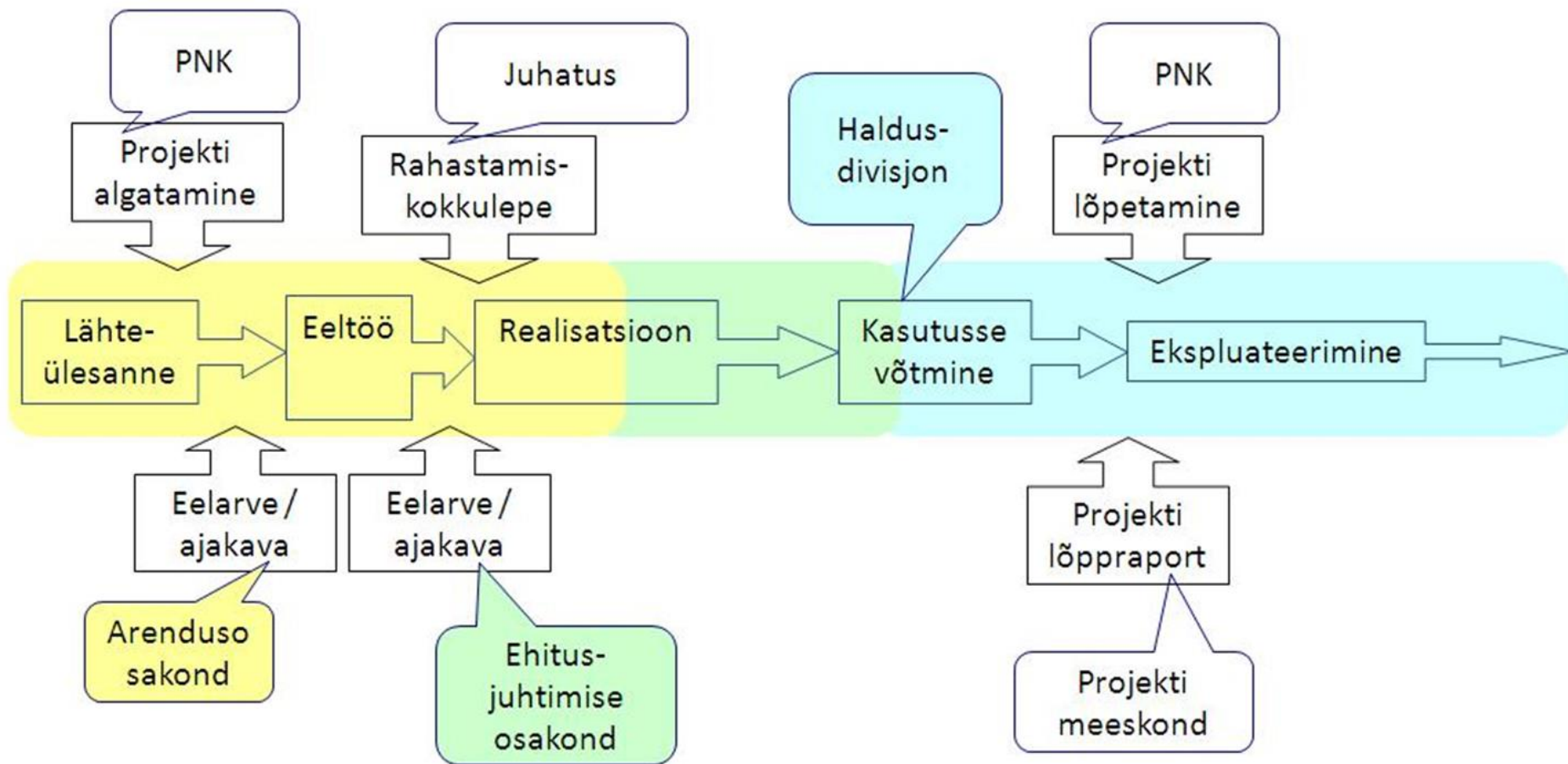


BIM in process



(c) Autodesk

process management in Riigi Kinnisvara AS



guidelines we have

- 2009 Riigi Kinnisvara AS BIM requirements

<http://www.rkas.ee/parim-praktika/bim>

- 2013 COBIM 2012 translations

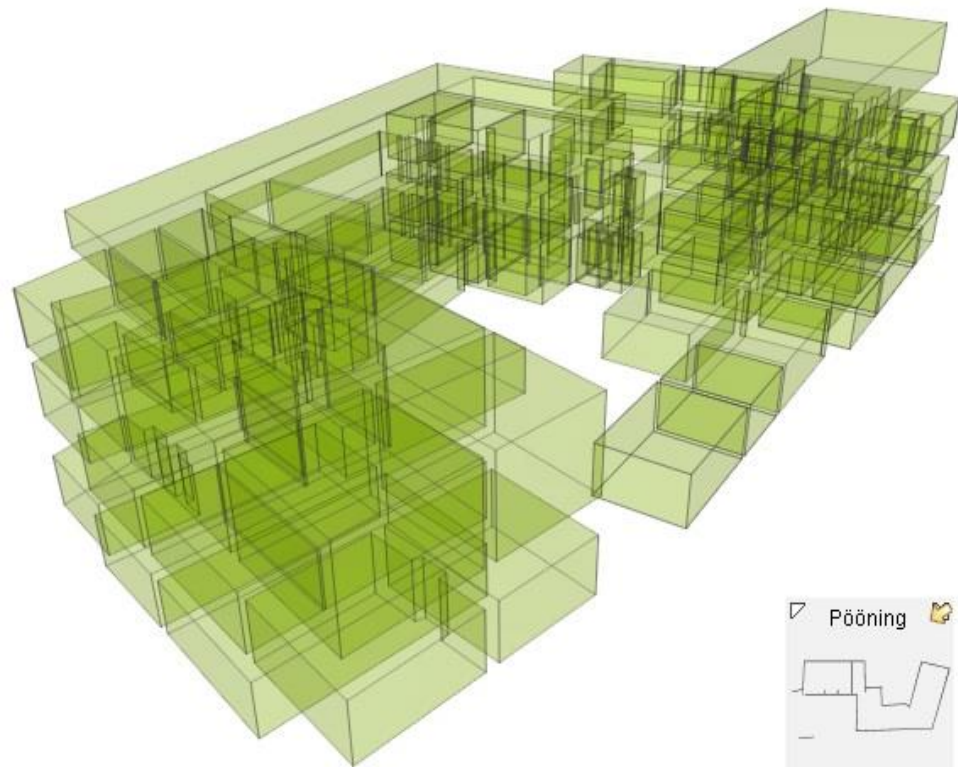
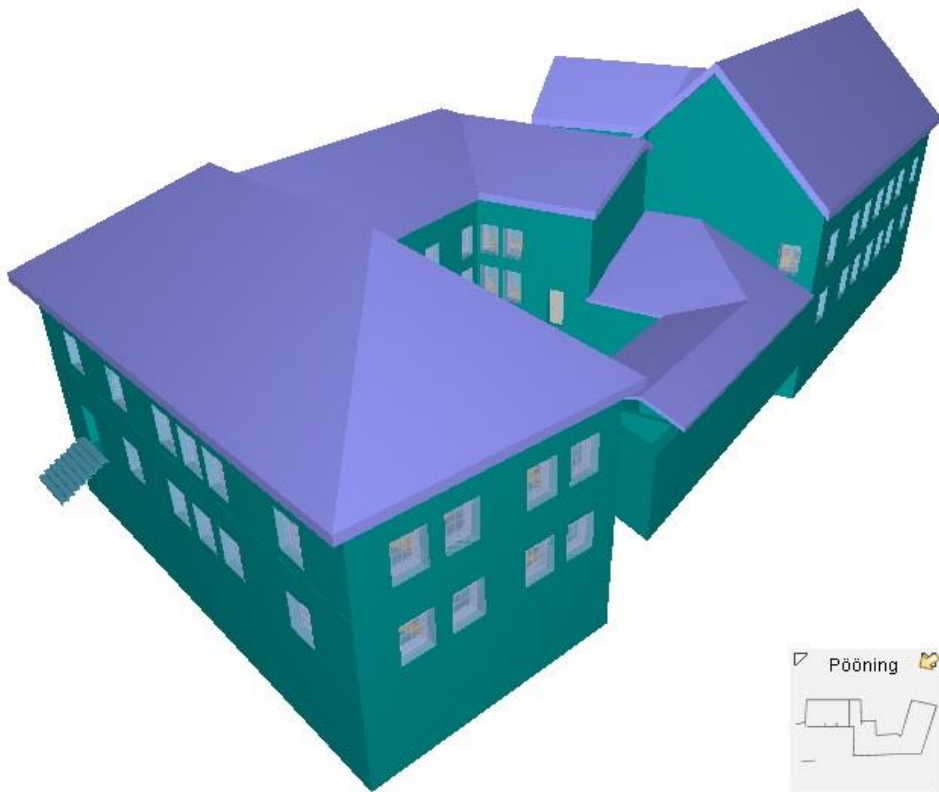
<http://www.tktk.ee/cobim2012>

Kiriku 2/4 Tallinn => vacant, tenant needs ca 2000 sqm

Office building
area ~1700 m², 2 floors



Kiriku 2/4 Tallinn



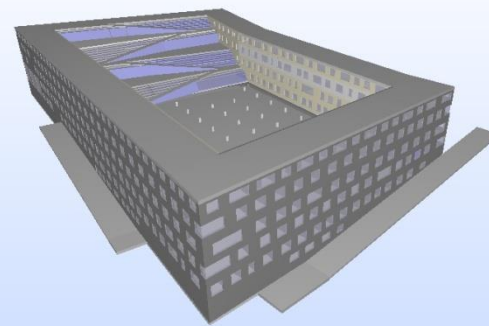
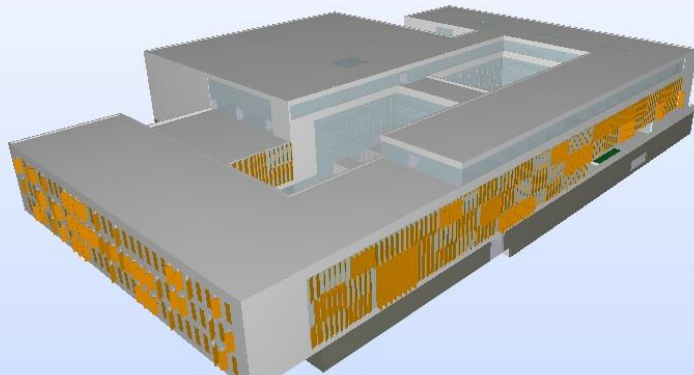
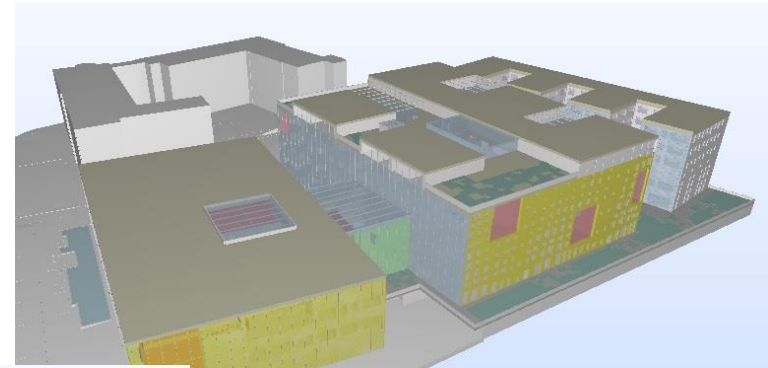
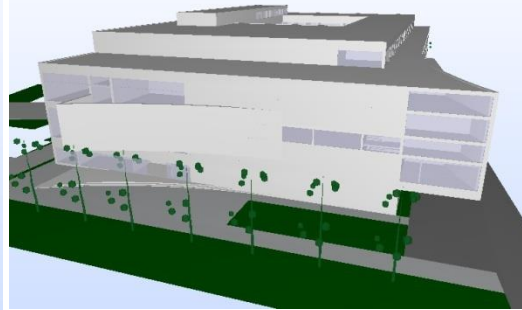
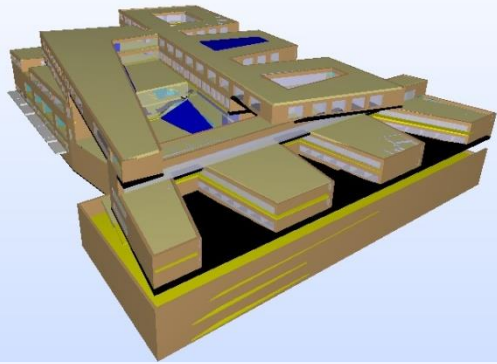
area ~2000+ m² including attic
suitable for a tenant

Art School in Tallinn

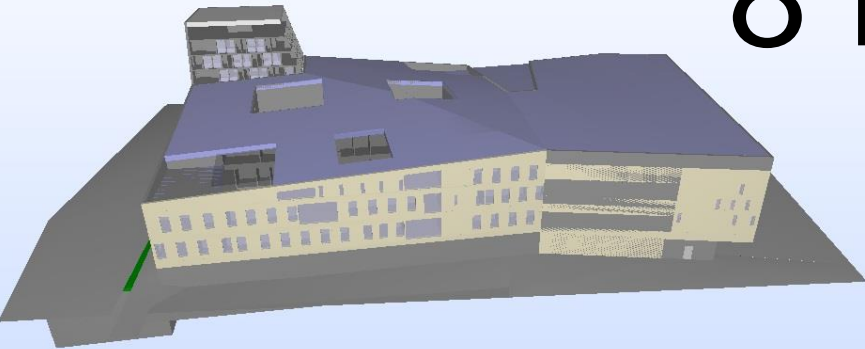
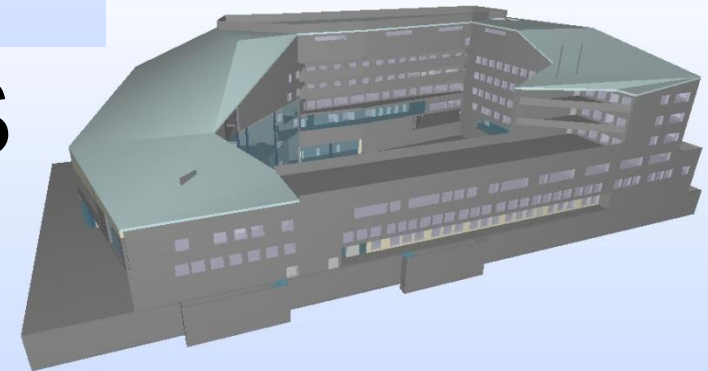
- 1st stage:
architectural
competition
- 2nd stage:
BIM
 - walls
 - slabs
 - space elements
 - room names



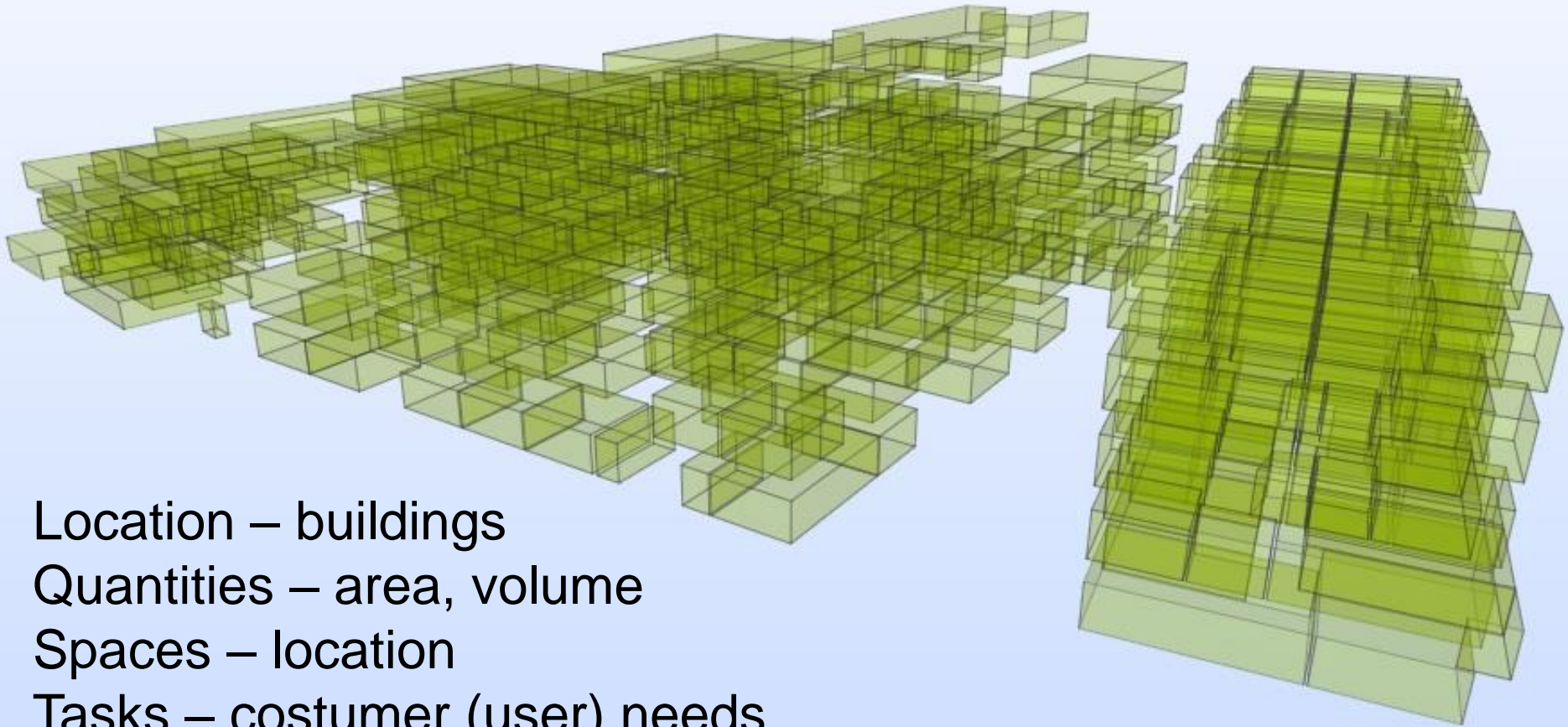
Art School in Tallinn



8 BIMs



Art School in Tallinn



Location – buildings
Quantities – area, volume
Spaces – location
Tasks – costumer (user) needs

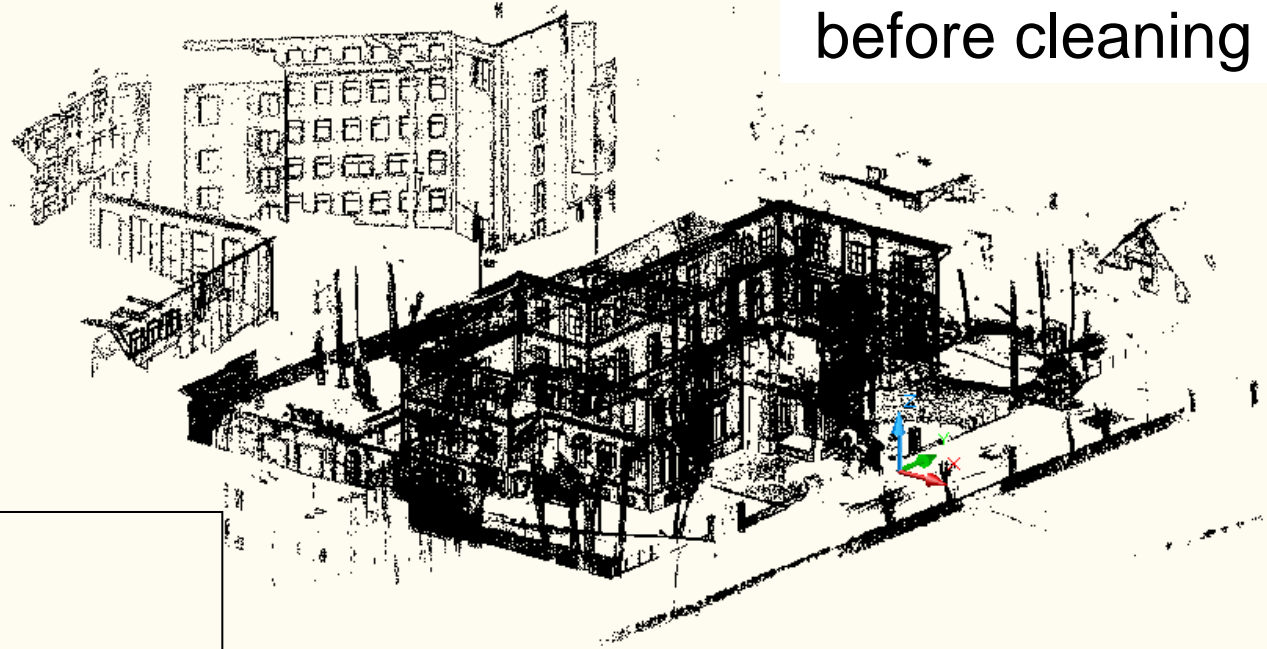
Wismari 7 Tallinn => scan to FM BIM

Office building
area ~2000 m²



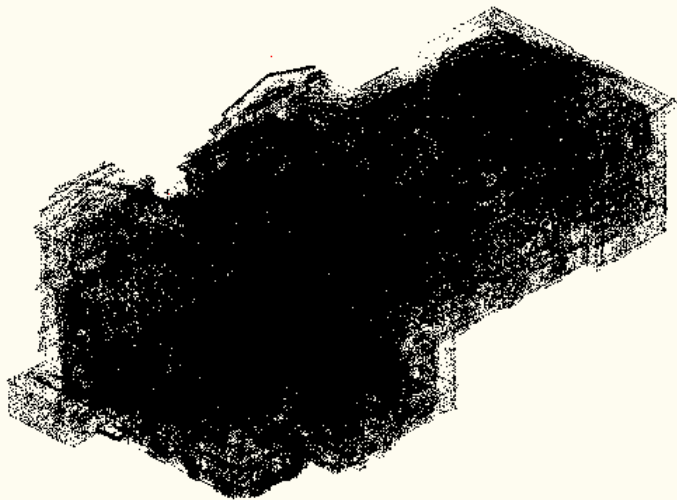
Wismari 7 Tallinn => scan to FM BIM

Point cloud



before cleaning

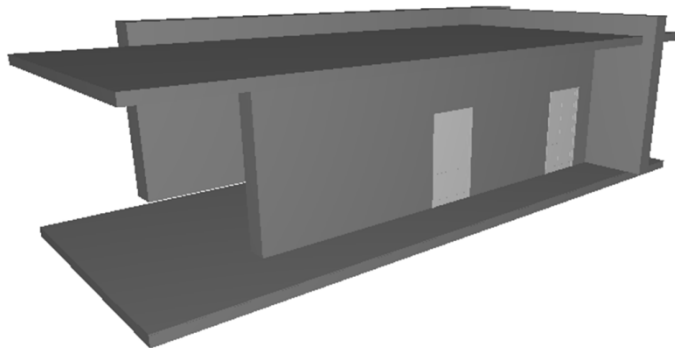
cleaned



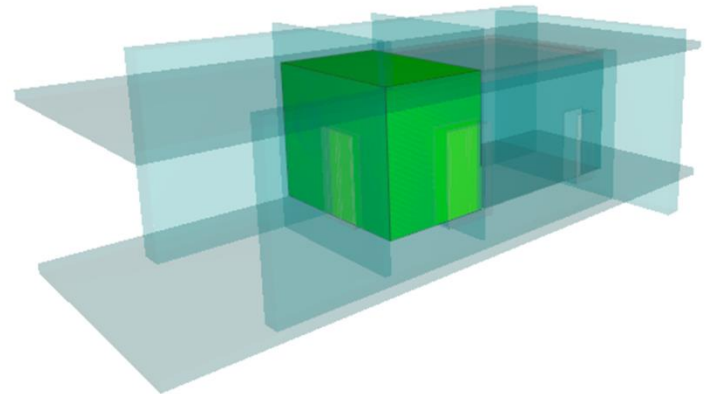
- Who creates a BIModel?
- What software to prefer?
- What kind of information to add, where? space vs element

Wismari 7 Tallinn => scan to FM BIM

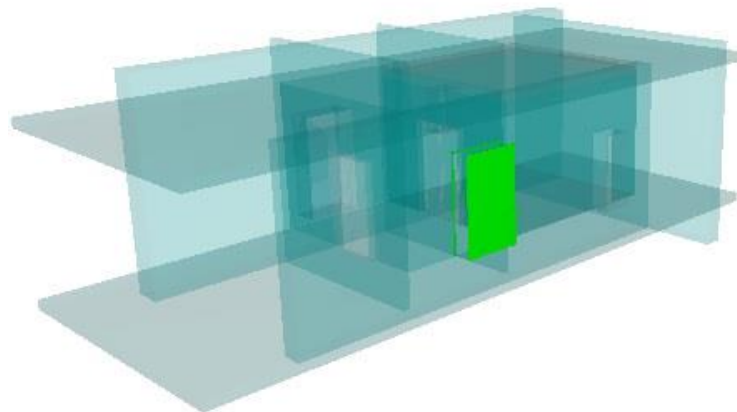
part of the building



a room

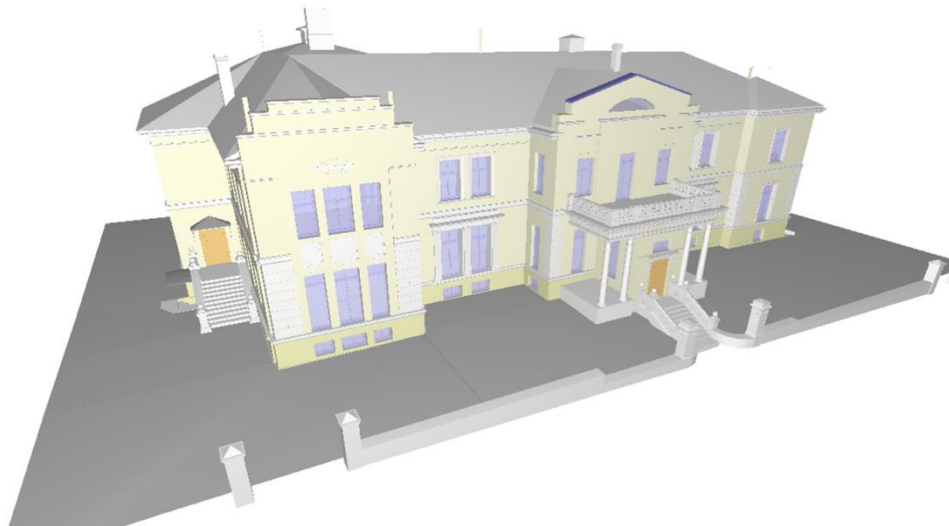


a door

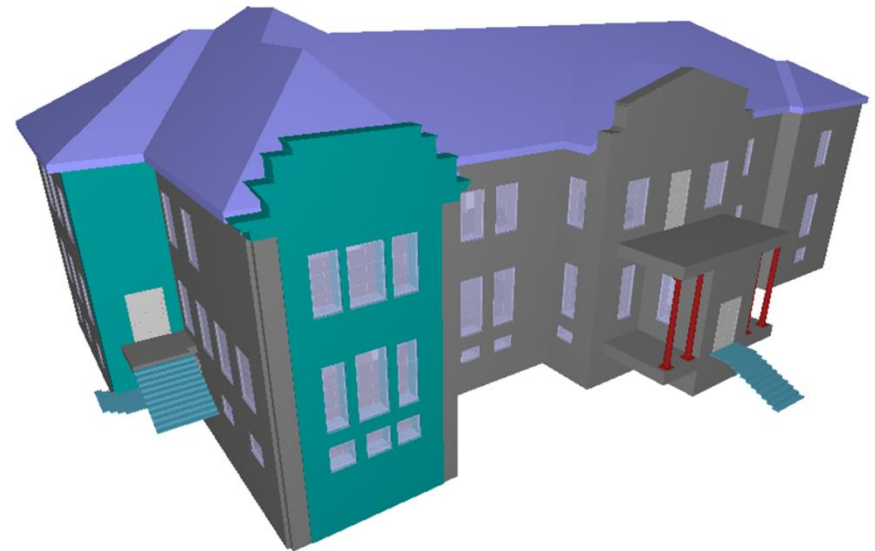


Wismari 7 Tallinn => scan to FM BIM

Model



BIM



Narva Police and Rescue Station => new building, 5000 m²



Different users

Different functions

- office
- customer service
- training and meeting rooms
- jail 24h
- rescue works 24h

Stage 1:

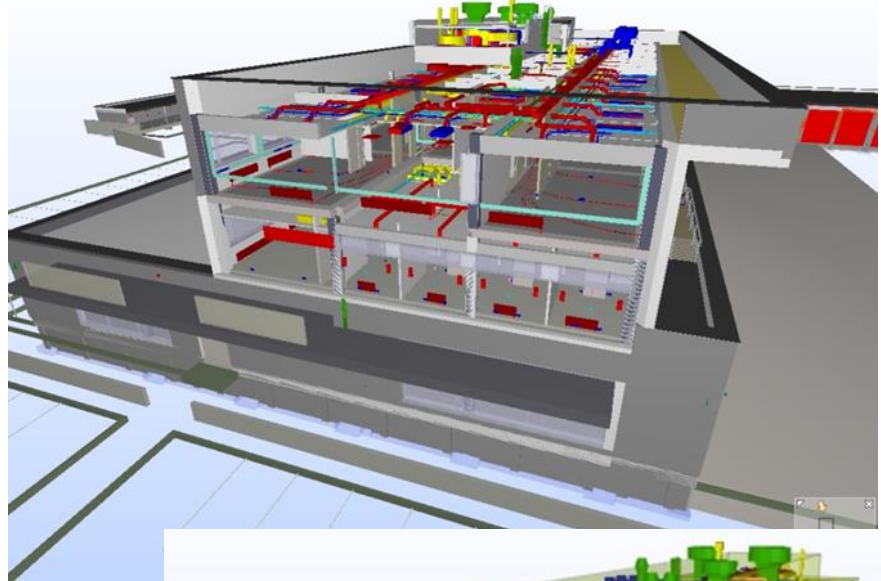
- design



Narva Police and Rescue Station => new building, 5000 m²

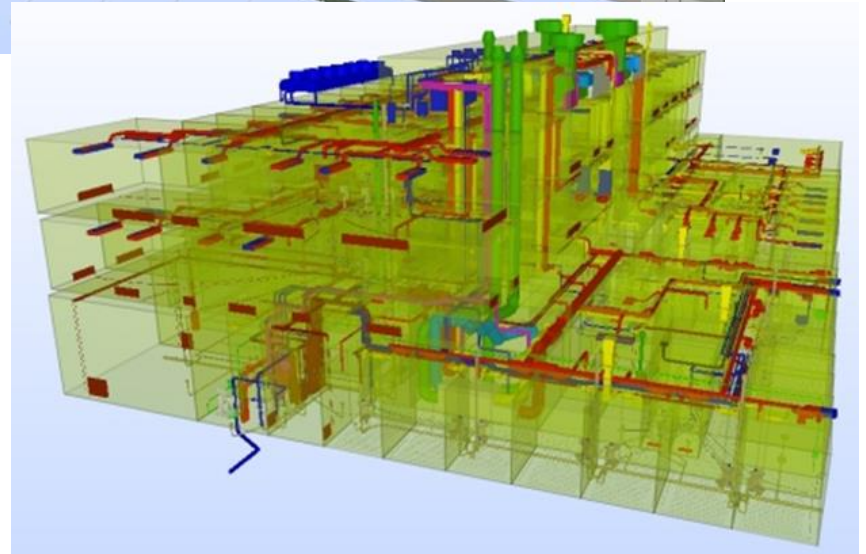
Softwares:

- ArchiCAD
- Revit Structure
- MagiCAD
- Solibri MC
- Tekla BIMsight

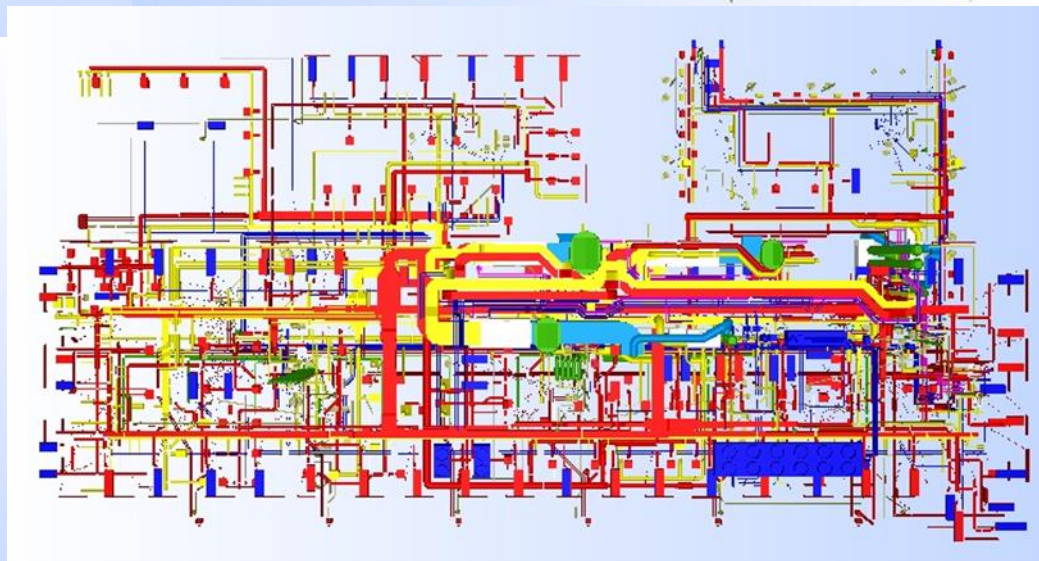
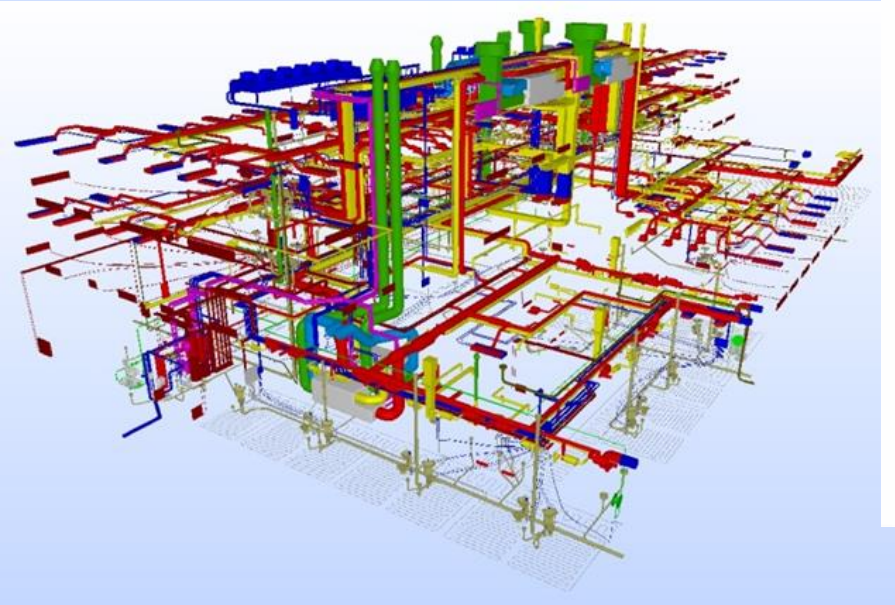
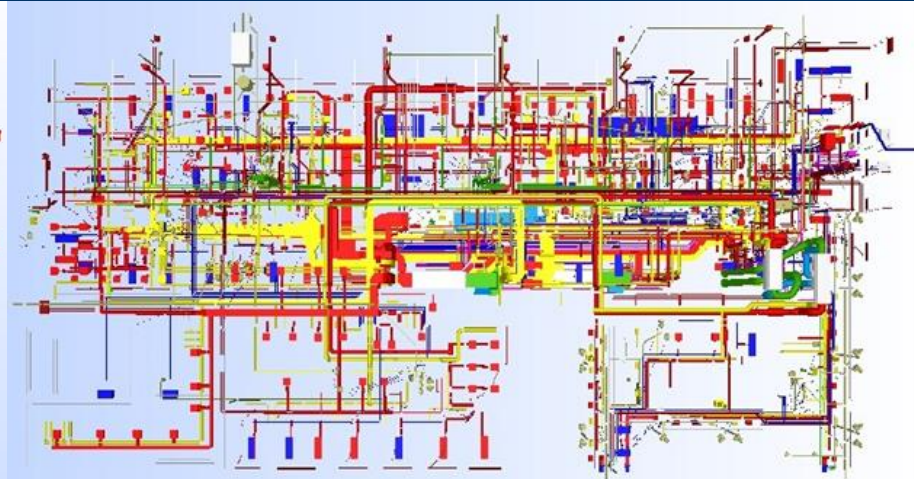
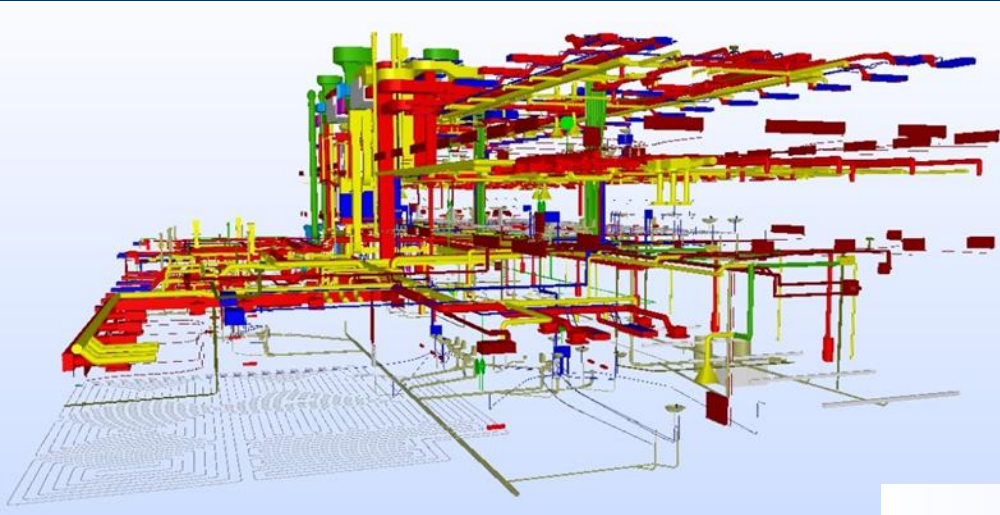


Main goals:

- better quality construction project
- quantity analysis
- clash detection
- energy analysis by models
- better communication



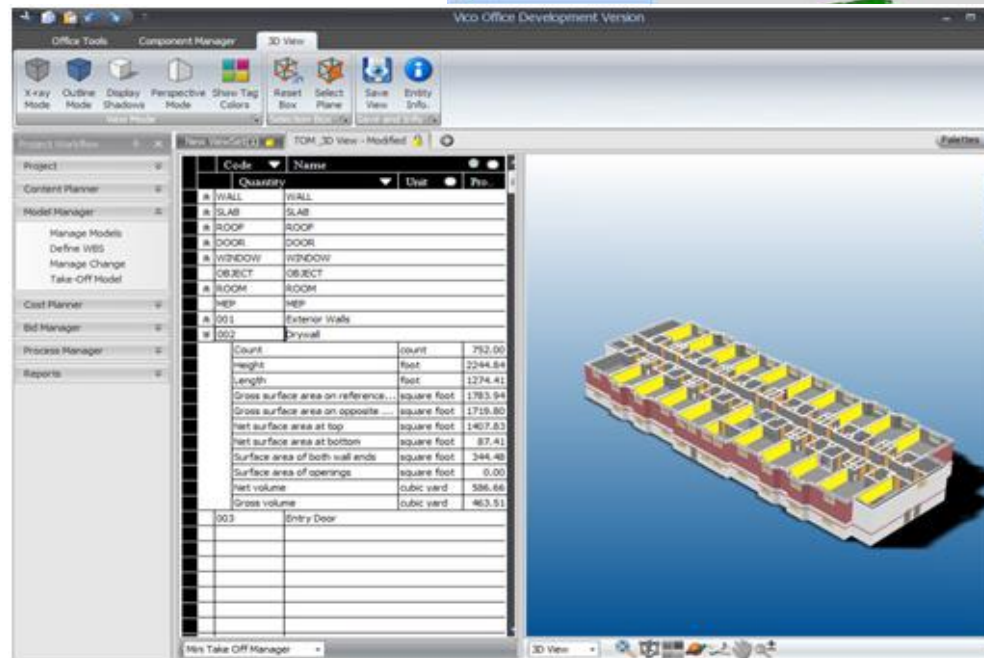
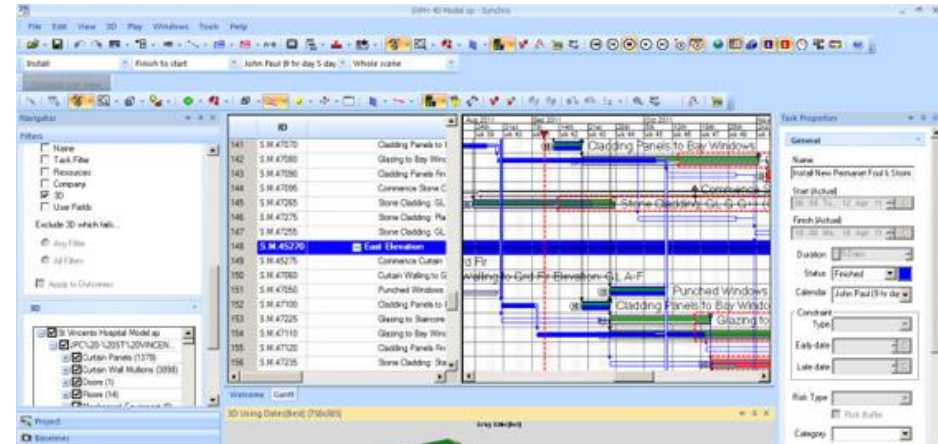
Narva Police and Rescue Station => new building, 5000 m²



Narva Police and Rescue Station => new building, 5000 m²

Stage 2

- Construction planning and management
- FM BIM



Softwares:

- Synchro
- VICO office
- Revit
- Solibri MC
- Tekla BIMsight

Suur-Ameerika 1 Tallinn => new building



Office building

- 2 towers
- Underground parking
- Closed net.area ~22,000 m²

Suur-Ameerika 1 Tallinn => new building

- Softwares:

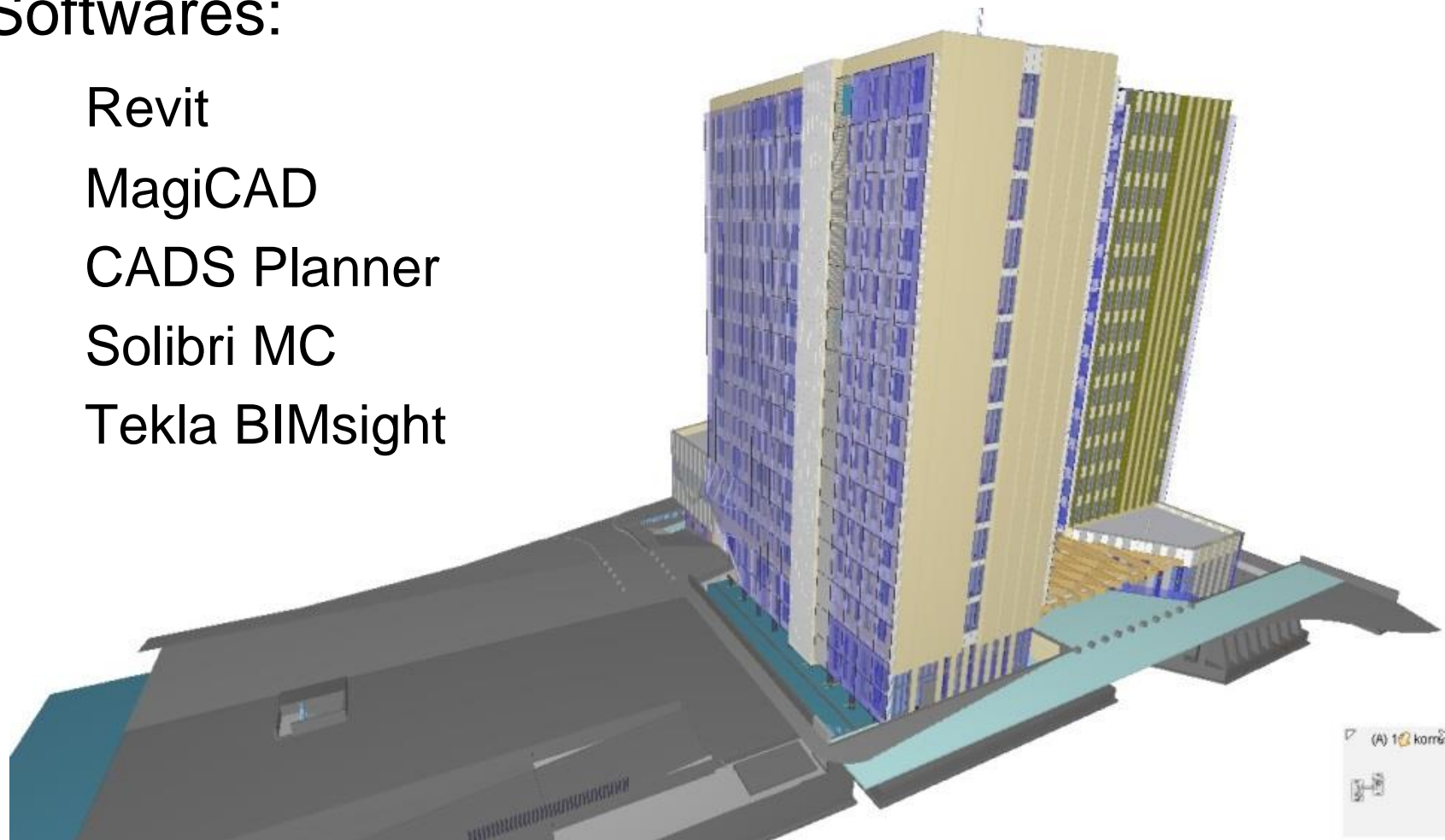
Revit

MagiCAD

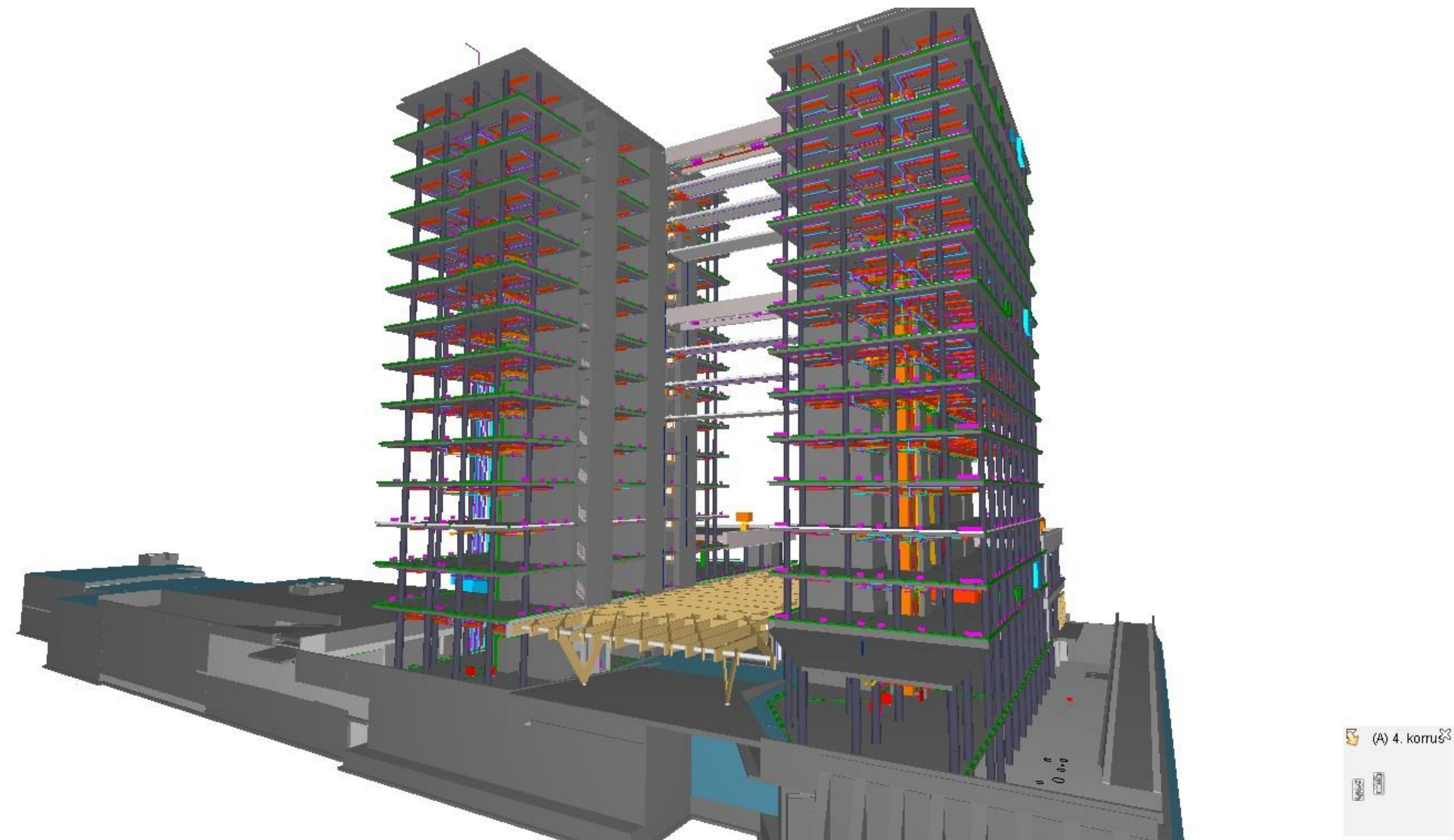
CADS Planner

Solibri MC

Tekla BIMsight



Suur-Ameerika 1 Tallinn => new building



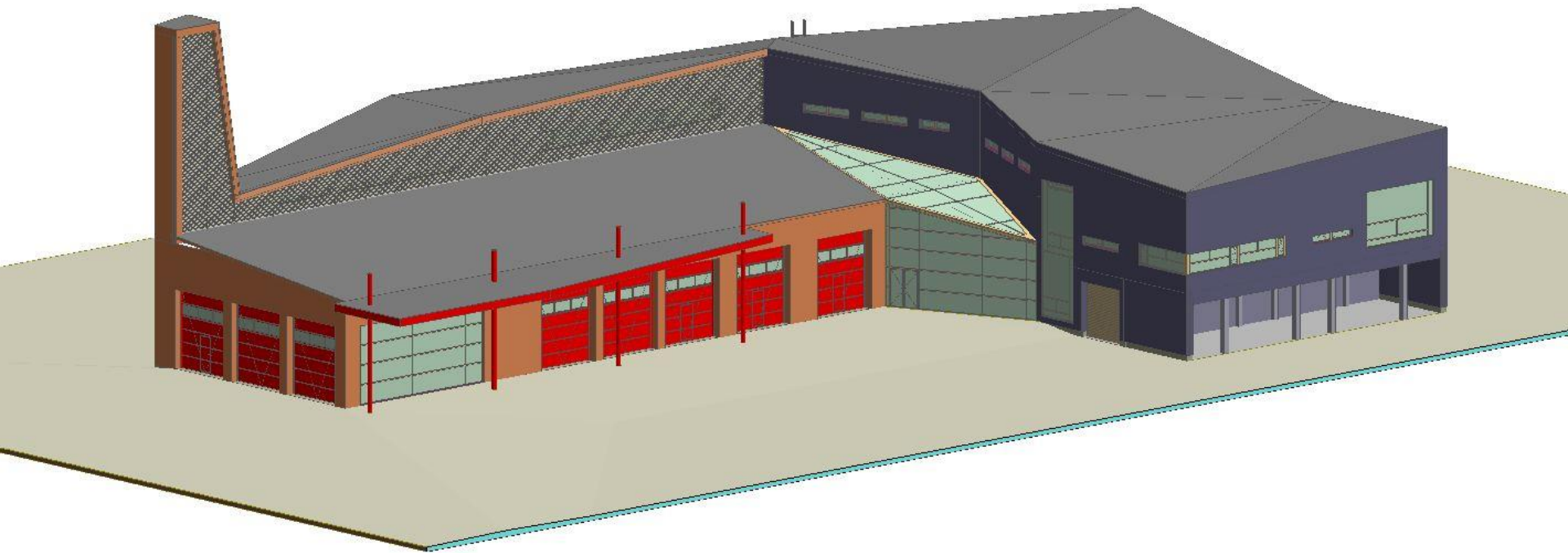
... under way

- Tallinna Vangla (prison)
- Rahvusarhiiv (National Archives)
- Piusa kordon (border guard station)
- Kiriku 2/4 Tallinn kontorihoone (office building)
- Pärnu PPA (police and rescue station)
- Lubja 4 kohtumaja (court building)

lonely BIM => Haapsalu orphanage



lonely BIM => Kuressaare police and rescue station



conclusions

- We have designers
- Communication stays
- Terms
 - kipsu vs light vs kyproc wall
 - office vs bureau vs ...
- Is standard suitable?
 - early design or more
 - detailed design or more
- Lack of BIM managers
 - experience
- Missing building elements



THANK YOU